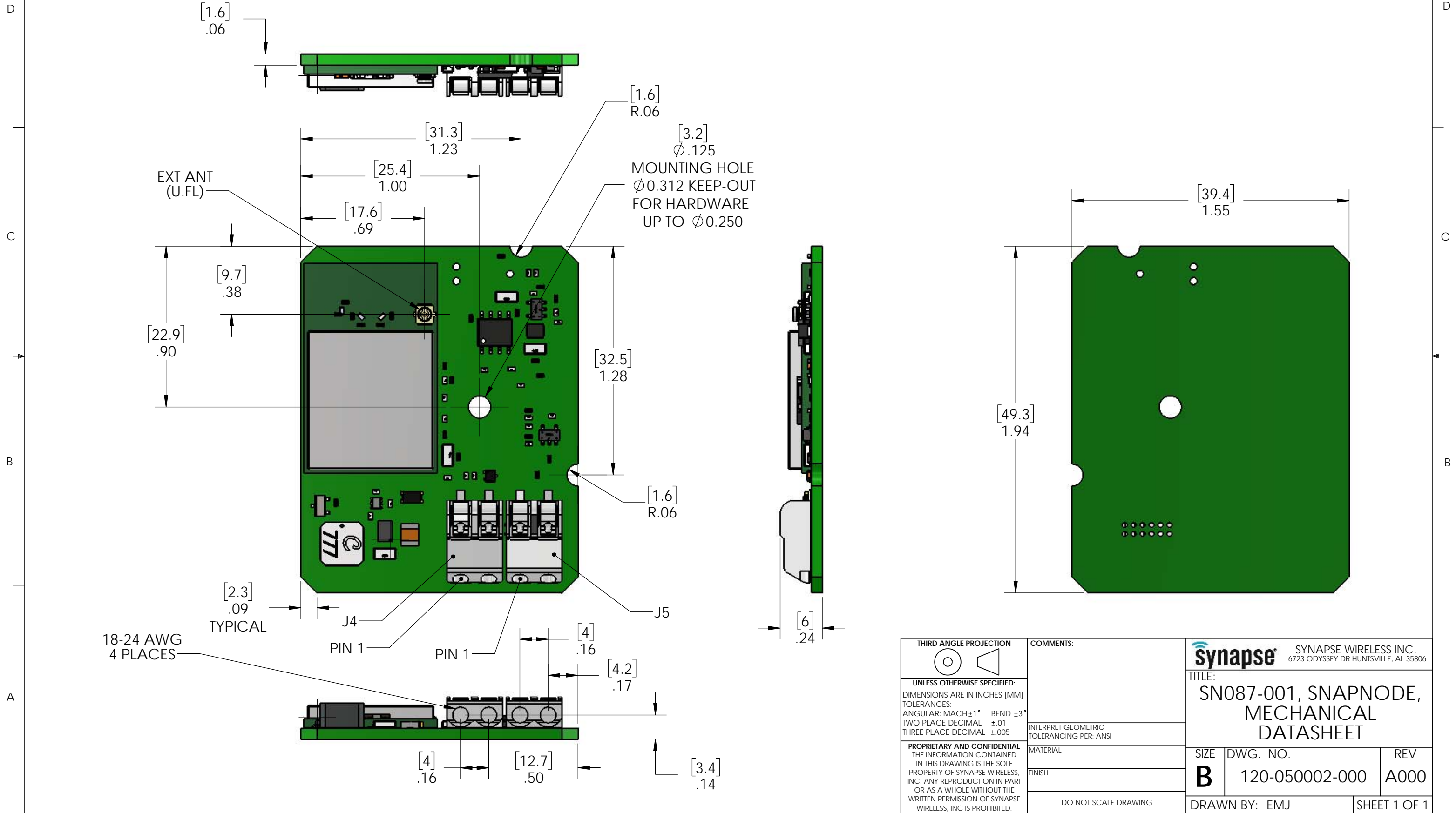


NOTES:
 1. FOR REFERENCE ONLY. THE USER OF THIS DOCUMENT ASSUMES ALL RESPONSIBILITY FOR VERIFYING THE INFORMATION PROVIDED HEREIN.

REVISIONS				
ZONE	REV.	CHANGE DESCRIPTION	APPROVED	DATE
ALL	A000	INITIAL RELEASE	2/15/17	EMJ



THIRD ANGLE PROJECTION UNLESS OTHERWISE SPECIFIED: DIMENSIONS ARE IN INCHES [MM] TOLERANCES: ANGULAR: MACH±1° BEND ±3° TWO PLACE DECIMAL ±.01 THREE PLACE DECIMAL ±.005	COMMENTS:	SYNAPSE WIRELESS INC. 6723 ODYSSEY DR HUNTSVILLE, AL 35806	
	PROPRIETARY AND CONFIDENTIAL THE INFORMATION CONTAINED IN THIS DRAWING IS THE SOLE PROPERTY OF SYNAPSE WIRELESS, INC. ANY REPRODUCTION IN PART OR AS A WHOLE WITHOUT THE WRITTEN PERMISSION OF SYNAPSE WIRELESS, INC IS PROHIBITED.	INTERPRET GEOMETRIC TOLERANCING PER: ANSI	TITLE: SN087-001, SNAPNODE, MECHANICAL DATASHEET
MATERIAL:	FINISH:	SIZE B	DWG. NO. 120-050002-000
DO NOT SCALE DRAWING		DRAWN BY: EMJ	REV A000
		SHEET 1 OF 1	